

DAC7554 Evaluation Module

User's Guide

Literature Number: SLAU154
March 2005

Contents

1	EVM Overview	5
1.1	Features.....	5
1.2	Power Requirements	5
1.3	EVM Basic Functions.....	6
2	PCB Design and Performance	7
2.1	PCB Layout	7
3	Bill of Materials	11
4	EVM Operation	12
4.1	Factory Default Setting	12
4.2	Host Processor Interface	13
4.3	EVM Stacking.....	13
4.4	The Output Operational Amplifier	13
4.5	Jumper Setting.....	15
4.6	Schematics	16
5	Related Documentation From Texas Instruments	17
5.1	Questions About This or Other Data Converter EVMs?	17
	Trademarks	17
	Important Notices	18

List of Figures

1	EVM Block Diagram	7
2	Top Silkscreen	8
3	Top Layer (Signal and Split Ground Plane)	8
4	Bottom Layer (Signal and Split Ground Plane)	9
5	Bottom Silkscreen	9
6	Drill Drawing	10
7	Factory Default Jumper Setting	12

List of Tables

1	Parts List	11
2	Factory Default Jumper Setting	12
3	DAC Output Channel Mapping	13
4	Unity Gain Output Jumper Settings	14
5	Gain of Two Output Jumper Settings	14
6	Jumper Settings to Add an Offset to the Output Op-amp	14
7	Jumper Setting Function	15

DAC7554EVM

This user's guide describes the characteristics, operation, and the use of the DAC7554 evaluation module. It covers all pertinent areas involved to properly use this EVM board along with the devices that it supports. The physical PCB layout, schematic diagram and circuit descriptions are included.

1 EVM Overview

This section gives a general overview of the DAC7554 evaluation module (EVM), and describes some of the factors that must be considered in using this module.

1.1 Features

This EVM features the DAC7554 digital-to-analog converter (DAC). The DAC7554 EVM is a simple evaluation module designed for a quick and easy way to evaluate the functionality and performance of the 12-bit resolution, quad-channel and serial input DAC. This EVM features an ultralow glitch voltage output with great linearity and monotonicity. The serial interface of this DAC can communicate with any host microprocessor or TI DSP base system.

1.2 Power Requirements

The following sections describe the power requirements of this EVM.

1.2.1 Supply Voltage

The dc power supply requirement for this DAC7554 EVM (VDD) is selectable between 3.3 V and 5 V via W1 jumper header. The 3.3 V comes from J6-8 or J5-1 (if installed), and the 5 V comes from J6-3 or J5-3 terminals (if installed), when plugged in via 5-6k interface card or the HPA449. These power supply voltages are referenced to ground through the J6-6 terminal. The V_{CC} and V_{SS} are only used by U2 operational-amplifier, which ranges from 15 V to -15 V maximum and connects through J1-3 and J1-1 respectively (if installed), or through J6-1 and J6-2 terminals. All the analog power supplies are referenced to analog ground through J1-2 and J6-6 terminals.

The negative rail of the output operational-amplifier, U2, can be selected between V_{SS} and AGND via W5 jumper. The external operational-amplifier is installed as an option to provide output signal conditioning or for other output mode requirement desired.

CAUTION

To avoid potential damage to the EVM board, make sure that the correct cables are connected to their respective terminals as labeled on the EVM board.

Stresses above the maximum listed voltage ratings may cause permanent damage to the device.

1.2.2 Reference Voltage

The 4.096-V precision voltage reference is provided to supply the external voltage reference and sets the voltage output range of the DAC under test through REF3140, U3, via jumper W4 by shorting pins 1 and 2. The test point TP4 as well as J4-20 are also provided to allow the user to connect to other external reference source if the onboard reference circuit is not desired. The external voltage reference should not exceed the applied power supply, V_{DD} , of the DAC under test.

The REF3140 precision reference is powered by +5VA through J6-4 or J5-3 (if installed) terminal.

CAUTION

When applying an external voltage reference through TP4 or J4-20, make sure that it does not exceed the DAC7554 power supply (V_{DD}) maximum. Otherwise, this can permanently damage the DAC7574, U1, device under test.

1.3 EVM Basic Functions

The DAC7554 EVM is designed primarily as a functional evaluation platform to test certain functional characteristics of the DAC7554 DAC. Functional evaluation of the DAC device can be accomplished with the use of any microprocessor, TI DSP or some sort of a waveform generator.

The headers J2 and P2 are the connectors provided to allow the control signals and data required to interface a host processor or waveform generator to the DAC7554 EVM using a custom built cable.

An adapter interface card (5-6k adapter interface) is also available to fit and mate with TI's TMS320C5000™ and TMS320C6000™ DSP Starter Kit (DSK). This alleviates the hassle involved in building a custom cable. In addition, there is also an MSP430 based platform (HPA449) that uses the MSP430F449 microprocessor, with which this EVM can connect and interface. For more details or information regarding the 5-6k adapter interface card or the HPA449 platform, call Texas Instruments or send email to dataconvapps@list.ti.com.

The DAC outputs can be monitored through the selected pins of J4 header connector. All the outputs can be switched through their respective jumpers W2, W11, W12 and W13, for the reason of stacking. Stacking allows a total of eight DAC channels to be used provided that the SYNC signal is unique for each EVM board stacked. The SYNC signal must be decoded for the specific EVM, therefore, the decoder should be implemented but can only be done externally from the EVM board.

In addition, the option of selecting one DAC output that can be fed to the noninverting side of the output operational-amplifier, U2, is also possible by using a jumper across the selected pins of J4. If two EVMs are stacked together, the output operational-amplifier's noninverting input, are shorted together at the J4 header. Alterations to the traces are necessary to use the U2 features. The traces for J4-1, J4-3, J4-5, and J4-7 are visible from the topside of the EVM. However, one issue still remains, the trace to the noninverting pin of U2 cannot be separated from J4-1. Therefore, only one of the stacked EVMs can be used with the U2 feature. Finally, the output operational-amplifier, U2, must first be configured correctly for the desired waveform characteristic to be seen. See section 4 of this user's guide.

A block diagram of the EVM is shown below in the [Figure 1](#).

The DAC7554 EVM board is constructed on a two-layer printed-circuit board using a copper-clad FR-4 laminate material. The printed-circuit board has a dimension of 43,1800 mm (1.7000 inch) × 81,2800 mm (3.200 inch), and the board thickness is 1,5748 mm (0.0620 inch). Figures 2 through 6 show the individual artwork layers.

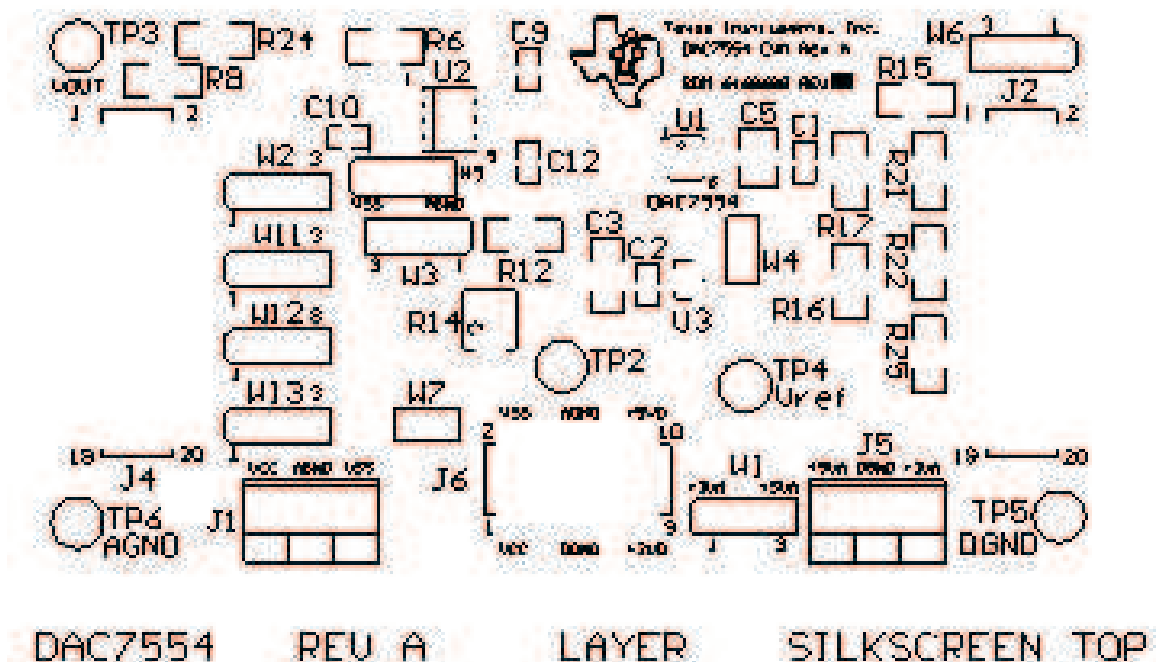


Figure 2. Top Silkscreen

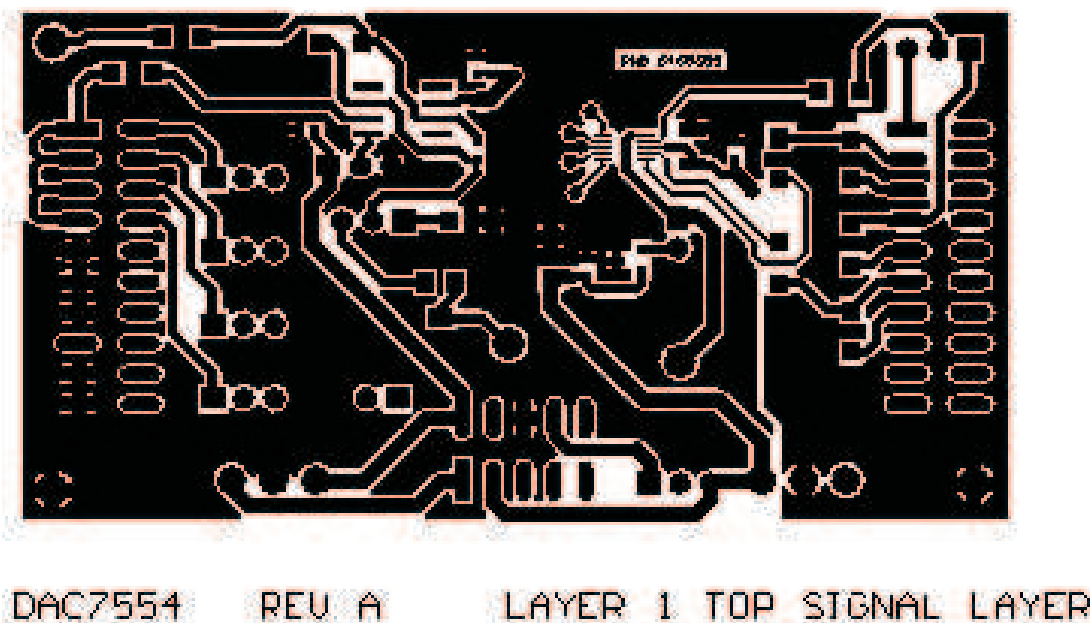
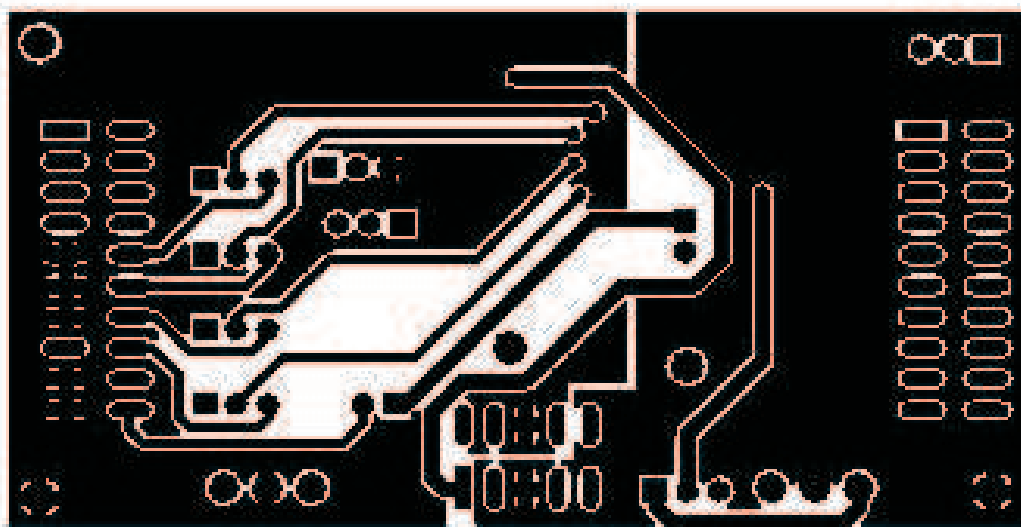


Figure 3. Top Layer (Signal and Split Ground Plane)



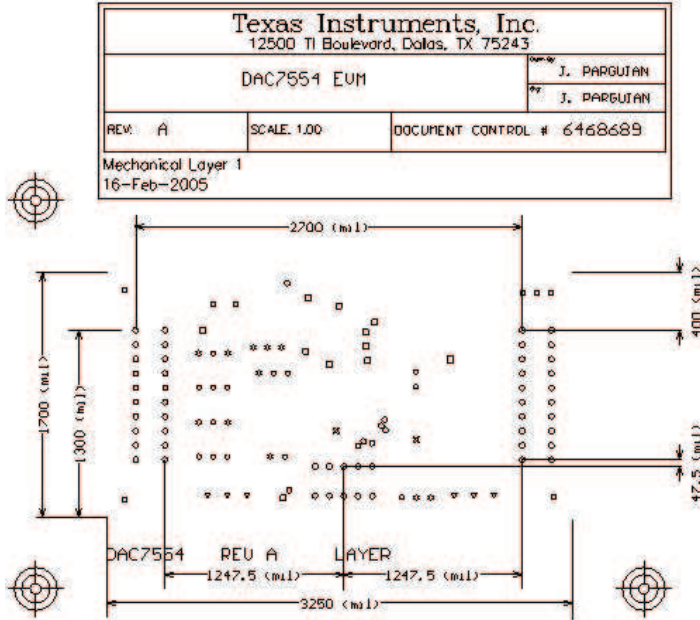
DAC7554 REV A LAYER 2 BOTTOM SIGNAL LAYER

Figure 4. Bottom Layer (Signal and Split Ground Plane)



DAC7554 REV A LAYER SILKSCREEN BOTTOM

Figure 5. Bottom Silkscreen



Notes:

1. PWB TO BE FABRICATED TO MEET OR EXCEED IPC-6012, CLASS 3 STANDARDS AND WORKMANSHIP SHALL CONFORM TO IPC-A-600, CLASS 3 - CURRENT REVISIONS
2. BOARD MATERIAL AND CONSTRUCTION TO BE UL APPROVED AND MARKED ON THE FINISHED BOARD.
3. LAMINATE MATERIAL: COPPER-CLAD FR-4
4. COPPER WEIGHT: 1oz FINISHED
5. FINISHED THICKNESS: .062 +/- .010
6. MIN PLATING THICKNESS IN THROUGH HOLES: .001"
7. SMOBC / HASL
8. LPI SOLDERMASK BOTH SIDES USING APPROPRIATE LAYER ARTWORK: COLOR = GREEN
9. LPI SILKSCREEN AS REQUIRED: COLOR = WHITE
10. VENDOR INFORMATION TO BE INCORPORATED ON BACK SIDE WHENEVER POSSIBLE
11. MINIMUM COPPER CONDUCTOR WIDTH IS: 10 MILS
MINIMUM CONDUCTOR SPACING IS: 5 MILS
12. NUMBER OF FINISHED LAYERS: 2

×	5	62mil	1.5748mm	PTH
▽	6	47mil	1.1938mm	PTH
*	28	37mil	0.9398mm	PTH
□	11	28mil	0.7112mm	PTH
○	60	15mil	0.381mm	PTH
	110	Total		

Figure 6. Drill Drawing

3 Bill of Materials

Table 1. Parts List

Item	QTY.	Designators	Description	Manufacturer	MFG. Part No.
1	2	C1, C2	0.1 μ F, CAP 25 V, ceramic chip, 0603 SMD	TDK	C1608X7R1E104KT
2	2	C9, C10	0.01 μ F, CAP 25 V, ceramic chip, 0603 SMD	TDK	C1608COG1E103KT
3	1	C12	1 nF, CAP 25 V, ceramic chip, 0603 SMD	TDK	C1608COG1E102KT
4	1	C3	0.47 pF, CAP 50 V, ceramic chip, 1206 SMD	TDK	C3216X7R1H474KT
5	1	C5	10 μ F, CAP 25 V, ceramic chip, 1210 SMD	TDK	C3225X7R1E106KT
6	2	R6, R12	10K	Panasonic	ERJ-8ENF1002V
7	1	R14	10K POT	Bourns	3214W-1-103E
8	7	R8, R15 R16, R17 R21, R22, R25	0 Ω ⁽¹⁾	Panasonic	ERJ-8GEY0R00V
9	1	R24	100 Ω	Panasonic	ERJ-8GEYJ101V
10	2	J2, J4	20 PIN_IDC	Samtec	TSM-110-01-S-DV-M
11	1	J6	10 PIN_IDC	Samtec	TSM-105-01-T-DV
12	2	J1, J3	3-Pin terminal connector ⁽²⁾	On-Shore Tech.	ED555/3DS
13	2	P2, P4	20-Pin_IDC ⁽³⁾	Samtec	SSW-110-22-S-DVS-P
14	1	P6	10-Pin Isolated Power Socket, 0.100 ⁽³⁾	Samtec	SSW-105-22-F-DVS-K
15	5	TP2, TP3, TP4, TP5, TP6	TP_TURRENT	Mill-Max	2348-2-01-00-00-07-0
16	1	U2	8-SOP(D) High Precision OP-Amp MSOP-10(DGS)	Texas Instruments	OPA277UA
17	1	U1	DAC7554, 12-Bit, 4-CH, SPI	Texas Instruments	DAC7554
18	1	U3	4.096V VOLTAGE REFERENCE SOT23-3	Texas Instruments	REF3140AIDBZT
19	2	W4, W7	2 CIRCUIT HEADER, 0.100 STRAIGHT	Molex	22-03-2021
20	8	W1, W2, W3, W5, W6, W11, W12, W13	3 CIRCUIT HEADER, 0.100 STRAIGHT	Molex	22-03-2031

(1) R21, R22, and R25 are not populated (1206 footprint).

(2) J1 and J3 are optional terminals and are not installed.

(3) P2, P4, and P6 parts are not shown in the schematic diagram. All the P designated parts are installed in the bottom side of the PC board opposite the J designated counterpart. Example, J2 is installed on the topside while P2 is installed in the bottom side opposite of J2.

4 EVM Operation

This section covers in detail the operation of the EVM to provide guidance to the user in evaluating the onboard DAC and how to interface the EVM to a specific host processor.

Refer to the DAC7554 data sheet, [SLAS399A](#), for information about its serial interface and other related topics.

The EVM board is factory tested and configured to operate in the unipolar output mode.

4.1 Factory Default Setting

The EVM board is set to its default configuration from factory as described on the table below to operate in unipolar mode of operation. The jumper configuration is shown on figure 7 for clarity.

Table 2. Factory Default Jumper Setting

Reference	Jumper Position	Function
W1	2-3	Analog supply for the DAC7554 is +5VA.
W2	1-2	DAC output A (V_{OUTA}) is routed to J4-2.
W3	OPEN	External operational-amplifier, U2, is in unity gain configuration.
W4	CLOSED	Onboard external reference, U3, is routed to V_{ref} .
W5	1-2	Negative supply rail of U2 Op-Amp is supplied with V_{SS} .
W6	2-3	CS signal from J2 is routed through to drive the SYNC signal.
W7	OPEN	External reference source from J2-20 is not connected.
W11	1-2	DAC output B (V_{OUTB}) is routed to J4-4.
W12	1-2	DAC output C (V_{OUTC}) is routed to J4-6.
W13	1-2	DAC output D (V_{OUTD}) is routed to J4-8.
J4	1-2	DAC output A (V_{OUTA}) is connected to the noninverting input of the output operational-amplifier, U2.

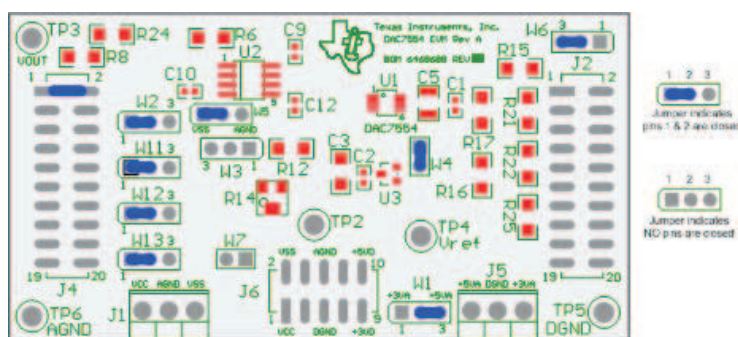


Figure 7. Factory Default Jumper Setting

4.2 Host Processor Interface

The host processor will basically drive the DAC, so the DACs proper operation depends on the successful configuration between the host processor and the EVM board. In addition, a properly written code is also required to operate the DAC.

A custom cable can be made specific to the host interface platform. The EVM allows interface to the host processor through J2 header connector for the serial control signals and the serial data input. The output can be monitored through the J4 header connector.

An interface adapter card is also available for specific TI DSP starter kit as well as an MSP430 based microprocessor as mentioned in chapter 1 of this manual. Using the interface card alleviates the tedious task of building customize cables and allows easy configuration of a simple evaluation system.

The DAC7554 interfaces with any host processor capable of handling serial communication protocols or the popular TI DSP. For more information regarding the DAC7554 data interface, please refer to the data sheet ([SLAS399A](#)).

4.3 EVM Stacking

The stacking of EVM is possible if there is a need to evaluate two DAC7554 to yield a total of eight channel output. A maximum of two EVMs are allowed since the output terminal, J4, dictates the number of DAC channels that can be connected without colliding. [Table 3](#) shows how the DAC output channels are mapped into the output terminal, J4, with respect to the jumper position of W2, W11, W12 and W13.

Table 3. DAC Output Channel Mapping

Reference	Jumper Position	Function
W2	1-2	DAC output A (V_{OUTA}) is routed to J4-2.
	2-3	DAC output A (V_{OUTA}) is routed to J4-10.
W11	1-2	DAC output B (V_{OUTB}) is routed to J4-4.
	2-3	DAC output B (V_{OUTB}) is routed to J4-12.
W12	1-2	DAC output C (V_{OUTC}) is routed to J4-6.
	2-3	DAC output C (V_{OUTC}) is routed to J4-14.
W13	1-2	DAC output D (V_{OUTD}) is routed to J4-8.
	2-3	DAC output D (V_{OUTD}) is routed to J4-16.

To allow exclusive control of each EVM when they are stacked together, each DAC7554 EVM must have its own unique SYNC signal. This is accomplished by implementing a decoder externally from the EVM board or the μ C or DSP can generate each specific SYNC signal for the appropriate EVM board in the stack. These specific SYNC signals that comes into J2-1 and J2-7 must be selected via the jumper W6 of each EVM board.

4.4 The Output Operational Amplifier

The EVM includes an optional signal conditioning circuit for the DAC output through an external operational amplifier, U2. Only one DAC output channel can be monitored at any given time for evaluation since the odd numbered pins (J4-1 to J4-7) are tied together. When the EVM board output operational-amplifier is used, the traces must be properly cut. The traces are visible on the edge of the EVM from the topside where the J4 header is assembled. The pin J4-1 on the EVM should not be used and should be left open because all the traces come to this point. This provides three other options (i.e., J4-3, J4-5, and J4-7) that can be used for signal routing and the other two unused traces should be cut. This option does not apply when stacking two EVMs, see section 1.3.

Nevertheless, the raw outputs of the DAC can be probed through the even pins of J4, the output terminal, which also provides mechanical stability when stacking or plugging into any interface card. In addition, it provides easy access for monitoring up to eight DAC channels when stacking two EVMs together. See section 4.3.

The following sections describes the different configurations of the output amplifier, U2.

4.4.1 Unity Gain Output

This is the default configuration that the EVM is set to from the factory. The buffered output configuration can be used to prevent loading the DAC7554 though it may present some slight distortion because of the feedback resistor and capacitor. The user can tailor the feedback circuit to closely match their desired wave shape by simply desoldering R7 and C11 and replacing it with the desired values. You can also simply get rid of R7 and C11 altogether and just solder a zero ohm resistor in replacement of R7, if desired.

Table 4 shows the jumper setting for the unity gain configuration of the DAC external output buffer in unipolar or bipolar mode.

Table 4. Unity Gain Output Jumper Settings

Reference	Jumper Setting		Function
	Unipolar	Bipolar	
W3	OPEN	OPEN	Disconnect R12 (gain resistor) or any signals attached in TP2 from the inverting input of the operational-amplifier.
W5	2-3	1-2	Supplies V_{SS} to the negative rail of operational-amplifier or ties it to AGND.

4.4.2 Output Gain of Two

Table 5 shows the proper jumper settings of the EVM for the 2x gain output of the DAC.

Table 5. Gain of Two Output Jumper Settings

Reference	Jumper Setting		Function
	Unipolar	Bipolar	
W3	1-2	1-2	Inverting input of the output operational-amplifier, U2, is connected to the gain resistor R12.
W5	2-3	1-2	Supplies power, V_{SS} , to the negative rail of operational-amplifier, U2, for bipolar mode, or ties it to AGND for unipolar mode.

4.4.3 Adding an Offset to the Output Operational-Amplifier

Another output configuration option is the capability to add an offset to the inverting input of the output operational-amplifier, U2. This is done by applying a voltage source into TP2 and adjusting the variable pot to the desired offset level. Table 6 shows the jumper setting configuration for adding an offset voltage.

Table 6. Jumper Settings to Add an Offset to the Output Op-amp

Reference	Jumper Setting		Function
	Unipolar	Bipolar	
W3	2-3	2-3	The offset voltage source is connected to the inverting input of the output operational-amplifier, U2.
W5	2-3	1-2	Supplies power, V_{SS} , to the negative rail of operational-amplifier, U2, for bipolar mode, or ties it to AGND for unipolar mode.

4.5 Jumper Setting

Table 7 shows the function of each specific jumper setting of the EVM.

Table 7. Jumper Setting Function

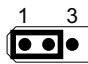
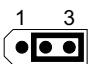
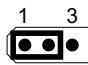
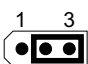
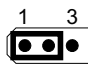
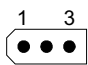
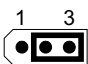


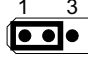
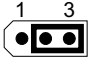
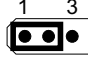
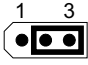


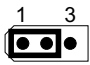
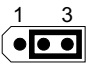
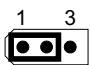
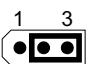
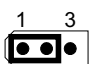
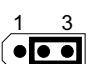

Reference	Jumper Setting	Function
W1		3.3-V analog supply is selected for DUT V_{DD} .
		5-V analog supply is selected for DUT V_{DD} .
W2		Routes V_{OUTA} to J4-2.
		Routes V_{OUTA} to J4-10.
W3		Connects the gain resistor, R12, to the inverting input of the output operational-amplifier, U2. Use for 2x gain configuration.
		Configures the output operational-amplifier, U2, for unity gain.
		Connects any voltage source applied to TP2 to the inverting input of the output operational-amplifier, U2 for offsetting intentions.
W4		Routes the onboard 4.096-V reference to the V_{ref} input of the DAC7554.
		Disconnects the onboard +4.096V reference from the V_{ref} input of the DAC7554 and allows other external reference source to be applied via TP4 or J4-20 (with W7 closed).
W5		Negative supply rail of the output operational-amplifier, U2, is powered by V_{SS} for bipolar operation.
		Negative supply rail of the output operational-amplifier, U2, is tied to AGND for unipolar operation.
W6		FSX signal from J2-7 is routed through to control the SYNC function of the DAC7554. Normally used for DSP operation.
		CS signal from J2-1 is routed through to control the SYNC function of the DAC7554. Normally used for μC operation.
W7		Disconnects the external reference source from J4-20 to the V_{ref} input of the DAC7554 and allows other external reference source to be applied via TP4 or from the onboard reference (with W4 closed).
		Routes the external reference source from J4-20 to the V_{ref} input of the DAC7554.

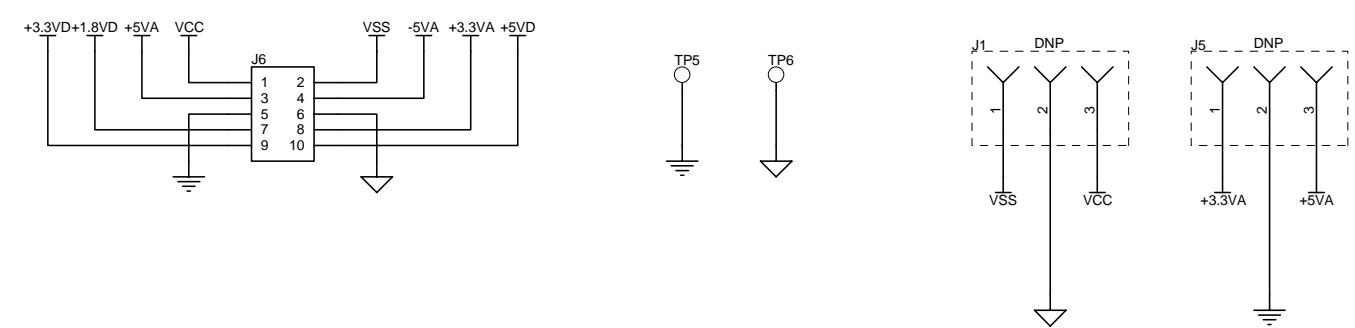
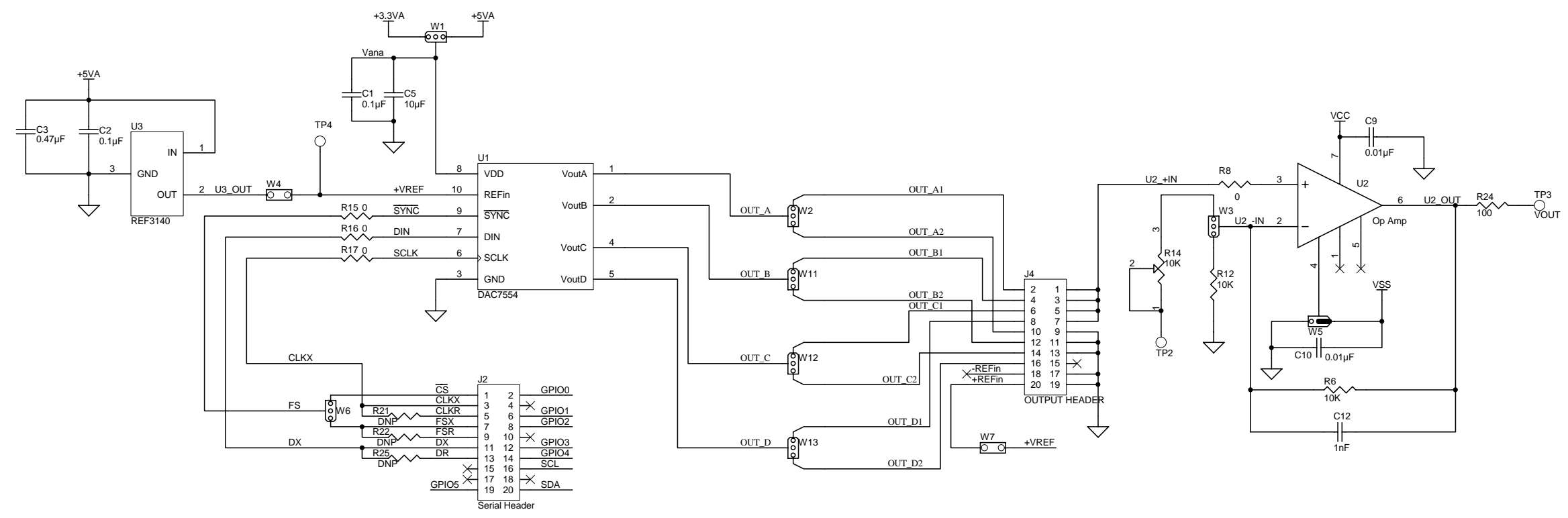
Table 7. Jumper Setting Function (continued)

Reference	Jumper Setting	Function
W11		Routes V_{OUTB} to J4-4.
		Routes V_{OUTB} to J4-12.
W12		Routes V_{OUTC} to J4-6.
		Routes V_{OUTC} to J4-14
W13		Routes V_{OUTD} to J4-8.
		Routes V_{OUTD} to J4-16.
Legend:		Indicates the corresponding pins that are shorted or closed.

4.6 Schematics

The DAC7554 schematics are shown on the following page.

Revision History		
REV	ECN Number	Approved



Notes:
 DNP = Do Not Populate
 VCC = +15V Analog Max
 VDD = +2.7V to +5.5V Digital Max
 VSS = 0V to -15V Analog Max

TEXAS INSTRUMENTS
 12500 TI Boulevard, Dallas, Texas 75243
 Title: **DAC7554 EVM**
 Engineer: J. PARGUIAN
 Drawn By: **6468690**
 FILE: DAC7554 Rev A.Sch
 DATE: 14-Feb-2005
 SIZE: SHEET: 1 OF: 1

5 Related Documentation From Texas Instruments

To obtain a copy of any of the following TI documents, call the Texas Instruments Literature Response Center at (800) 477–8924 or the Product Information Center (PIC) at (972) 644–5580. When ordering, identify this manual by its title and literature number. Updated documents can also be obtained through our website at www.ti.com.

Data Sheets:	Literature Number:
DAC7554	SLAS399A
REF3140	SBVS046A
OPA277	SBOS079

5.1 Questions About This or Other Data Converter EVMs?

If you have questions about this or other Texas Instruments Data Converter evaluation modules, feel free to e-mail the Data Converter Application Team at dataconvapps@list.ti.com. Include in the subject heading the product you have questions or concerns with.

Trademarks

TMS320C5000, TMS320C6000 are trademarks of Texas Instruments.

EVM IMPORTANT NOTICE

Texas Instruments (TI) provides the enclosed product(s) under the following conditions:

This evaluation kit being sold by TI is intended for use for **ENGINEERING DEVELOPMENT OR EVALUATION PURPOSES ONLY** and is not considered by TI to be fit for commercial use. As such, the goods being provided may not be complete in terms of required design-, marketing-, and/or manufacturing-related protective considerations, including product safety measures typically found in the end product incorporating the goods. As a prototype, this product does not fall within the scope of the European Union directive on electromagnetic compatibility and therefore may not meet the technical requirements of the directive.

Should this evaluation kit not meet the specifications indicated in the EVM User's Guide, the kit may be returned within 30 days from the date of delivery for a full refund. **THE FOREGOING WARRANTY IS THE EXCLUSIVE WARRANTY MADE BY SELLER TO BUYER AND IS IN LIEU OF ALL OTHER WARRANTIES, EXPRESSED, IMPLIED, OR STATUTORY, INCLUDING ANY WARRANTY OF MERCHANTABILITY OR FITNESS FOR ANY PARTICULAR PURPOSE.**

The user assumes all responsibility and liability for proper and safe handling of the goods. Further, the user indemnifies TI from all claims arising from the handling or use of the goods. Please be aware that the products received may not be regulatory compliant or agency certified (FCC, UL, CE, etc.). Due to the open construction of the product, it is the user's responsibility to take any and all appropriate precautions with regard to electrostatic discharge.

EXCEPT TO THE EXTENT OF THE INDEMNITY SET FORTH ABOVE, NEITHER PARTY SHALL BE Liable to the other FOR ANY INDIRECT, SPECIAL, INCIDENTAL, OR CONSEQUENTIAL DAMAGES.

TI currently deals with a variety of customers for products, and therefore our arrangement with the user **is not exclusive**.

TI assumes **no liability for applications assistance, customer product design, software performance, or infringement of patents or services described herein.**

Please read the EVM User's Guide and, specifically, the EVM Warnings and Restrictions notice in the EVM User's Guide prior to handling the product. This notice contains important safety information about temperatures and voltages. For further safety concerns, please contact the TI application engineer.

Persons handling the product must have electronics training and observe good laboratory practice standards.

No license is granted under any patent right or other intellectual property right of TI covering or relating to any machine, process, or combination in which such TI products or services might be or are used.

Mailing Address: Texas Instruments, Post Office Box 655303, Dallas, Texas 75265
Copyright © 2004, Texas Instruments Incorporated

EVM WARNINGS AND RESTRICTIONS

It is important to operate this EVM within the input voltage range of 3.3 V to 5 V and the output voltage range of 0 V to 5 V.

Exceeding the specified input range may cause unexpected operation and/or irreversible damage to the EVM. If there are questions concerning the input range, please contact a TI field representative prior to connecting the input power.

Applying loads outside of the specified output range may result in unintended operation and/or possible permanent damage to the EVM. Please consult the EVM User's Guide prior to connecting any load to the EVM output. If there is uncertainty as to the load specification, please contact a TI field representative.

During normal operation, some circuit components may have case temperatures greater than 85°C. The EVM is designed to operate properly with certain components above 85°C as long as the input and output ranges are maintained. These components include but are not limited to linear regulators, switching transistors, pass transistors, and current sense resistors. These types of devices can be identified using the EVM schematic located in the EVM User's Guide. When placing measurement probes near these devices during operation, please be aware that these devices may be very warm to the touch.

Mailing Address: Texas Instruments, Post Office Box 655303, Dallas, Texas 75265
Copyright © 2004, Texas Instruments Incorporated

IMPORTANT NOTICE

Texas Instruments Incorporated and its subsidiaries (TI) reserve the right to make corrections, modifications, enhancements, improvements, and other changes to its products and services at any time and to discontinue any product or service without notice. Customers should obtain the latest relevant information before placing orders and should verify that such information is current and complete. All products are sold subject to TI's terms and conditions of sale supplied at the time of order acknowledgment.

TI warrants performance of its hardware products to the specifications applicable at the time of sale in accordance with TI's standard warranty. Testing and other quality control techniques are used to the extent TI deems necessary to support this warranty. Except where mandated by government requirements, testing of all parameters of each product is not necessarily performed.

TI assumes no liability for applications assistance or customer product design. Customers are responsible for their products and applications using TI components. To minimize the risks associated with customer products and applications, customers should provide adequate design and operating safeguards.

TI does not warrant or represent that any license, either express or implied, is granted under any TI patent right, copyright, mask work right, or other TI intellectual property right relating to any combination, machine, or process in which TI products or services are used. Information published by TI regarding third-party products or services does not constitute a license from TI to use such products or services or a warranty or endorsement thereof. Use of such information may require a license from a third party under the patents or other intellectual property of the third party, or a license from TI under the patents or other intellectual property of TI.

Reproduction of information in TI data books or data sheets is permissible only if reproduction is without alteration and is accompanied by all associated warranties, conditions, limitations, and notices. Reproduction of this information with alteration is an unfair and deceptive business practice. TI is not responsible or liable for such altered documentation.

Resale of TI products or services with statements different from or beyond the parameters stated by TI for that product or service voids all express and any implied warranties for the associated TI product or service and is an unfair and deceptive business practice. TI is not responsible or liable for any such statements.

Following are URLs where you can obtain information on other Texas Instruments products and application solutions:

Products		Applications	
Amplifiers	amplifier.ti.com	Audio	www.ti.com/audio
Data Converters	dataconverter.ti.com	Automotive	www.ti.com/automotive
DSP	dsp.ti.com	Broadband	www.ti.com/broadband
Interface	interface.ti.com	Digital Control	www.ti.com/digitalcontrol
Logic	logic.ti.com	Military	www.ti.com/military
Power Mgmt	power.ti.com	Optical Networking	www.ti.com/opticalnetwork
Microcontrollers	microcontroller.ti.com	Security	www.ti.com/security
		Telephony	www.ti.com/telephony
		Video & Imaging	www.ti.com/video
		Wireless	www.ti.com/wireless

Mailing Address: Texas Instruments
Post Office Box 655303 Dallas, Texas 75265